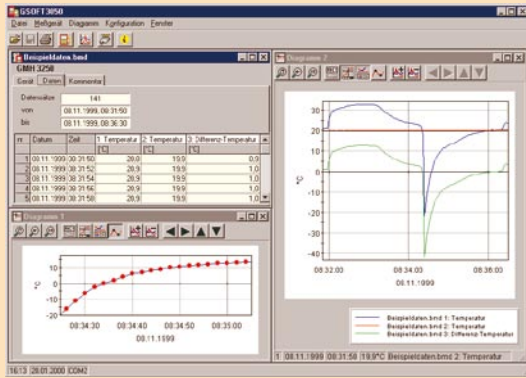


Hand-held instruments - software

Operation for GMH 3xxx - logger device



GSOFT 3050

Windows-software for the setting, data read-out and printing of all data stored by devices of the GMH3xxx-series with logger function.

General advice:

With GSOFT3050 you are able to operate the logger function of the GMH3000-hand-held series. The logger recordings can be started, stopped, read in and displayed. It is also possible to operate several instruments simultaneously and to display their data in mutual diagrams. Data will be read via the serial interfaces 'COM 1' - 'COM 255' of your PC and an interface adapter (GRS3100, GRS3105 or USB3100).

Software is multilingual, the language can be selected simply in the programme. Executable with Windows 95, 98, Me, NT, 2000, XP and Vista.

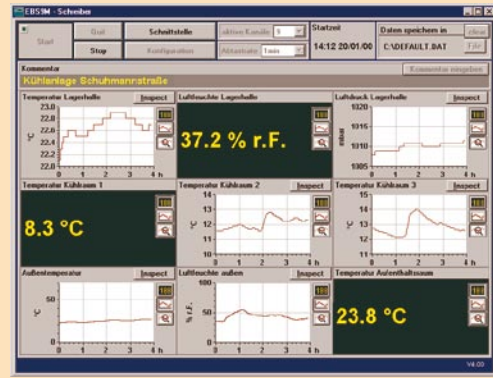
The GSOFT3050 offers, among others, the following functions:

- **Display of the GMH-information**
- **Setting of the alarm function** for GMH3xxx devices.
- **Operation of the logger function**
simple selection of the logger function (cyclic or manual), setting of cycle time, logger recording start and stop, read-out of logger data.
- **Diagram display of logger data**
The logger data can be displayed in form of a diagram. It is possible to display various measuring sequences in one diagram. The diagram offers the following functions:
 - display including real-time axis, zooming of display view
 - display of legend can be switched on/off
 - marking of measuring points can be switched on/off
 - a new/existing measuring sequence can be added/deleted at any time
- **Logger data print-out**
Data can be printed as tables (complete measuring sequence or limited area) or as diagram (in accordance with the current diagram window).
- **Memorizing of logger data**
The logger data can be saved in files and, therefore, called up again at any given time without a connected device.
- **Export of logger data to ASCII (text) file format**
- **Memorizing of windows**
Data and diagram windows can be placed at any desired. The setup of the windows can be stored as 'view'.

GMH 3000.DLL

Windows-functional library for interface communication GMH3xxx - PC, to write your own programs

Recording - long-time monitoring - large-digit display



EBS 9M (nine channels - with remote operating)

In connection with a PC this software makes up a low-price and comfortable multi-channel acquisition program for measuring data. The software supports the following measuring systems, interface converter and measuring components.

Meas. system	Interface converter	Components
EASYbus	EBW1, EBW3, EBW64, EBW240, EB200MC	EASYlog, EBT, EBHT, EBN, EBG, GIA20EB, GIA2000, GIR2002
GMH-series	GRS3100/3105, USB3100	GMH3xxx, GFTB100/GRS, GCO100

A combination of the various measuring systems is not possible.

General advice:

Data are read via the serial interfaces of your personal computer and an suitable interface converter. In combination with a standard modem and an EASYBus modem a remote application can be set up. (p.r.t. page 77) Software executable with: Windows 95, 98, Me, NT, 2000 and XP.

Module „Recording/large-digit display“

Measuring values displayed as y/t-diagram or digital indication adjustable scan rate: 0.5/1/2/5/10/30 sec., 1/2/5/10/30 min., 1/2/5 h. functions:

- automatic scaling, scrolling function
- adjustable display range, axis identification possible
- switch over from y/t-diagram to digital display
- automatic system initialisation
- adjustable start and stop conditions

Module „data display“

Loading of stored measuring values and display as y/t-diagram

- automatic scaling for t- an y-axis can be switched on/off
- display range and grid selectable
- line width and colour freely selectable
- identification of meas. points can be selected
- output to printer

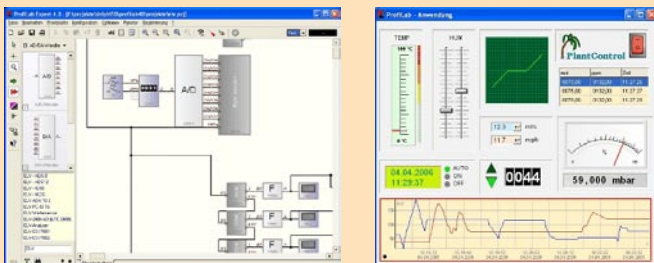
The "data display" module can be used together with the modules "recorder". Therefore, it is possible any time to check the measuring values already stored without having to interrupt the on-going recording process.

Export-Tool „EBS9M Convert“

For modification of stored data files to use the data in other software. It can be chosen the time format (absolute or relative to the start if the recording), the decimal point type and the character to separate the data sets. So that the data can be read and processed by almost all standard software programmes (eg. Excel).

ProfiLab-Expert 4.0

The software ProfiLab-Expert allows you to develop your own digital or analog measuring technology requirement.



It doesn't matter if you want to create analog measurements or digital controls - you can realize it all. And for all this you don't have to write a single program-line!

ProfiLab-Expert supports our devices of the GMH3xxx-Serie with serial interface, GCO100, GFTB100/GRS, as well as all EASYBus-devices. Every device will be displayed in your project like a normal component. You only have to connect his inputs and outputs.

Compiler inclusive !

ProfiLab-Expert is equipped with an integrated compiler. The compiler can create executable files for stand-alone applications that run on systems without ProfiLab-Expert. The distribution of these compiled applications is unlimited, so ProfiLab-Expert become a complete and professional developers system. Software executable with: Windows 95, 98, Me, NT, 2000 and XP.