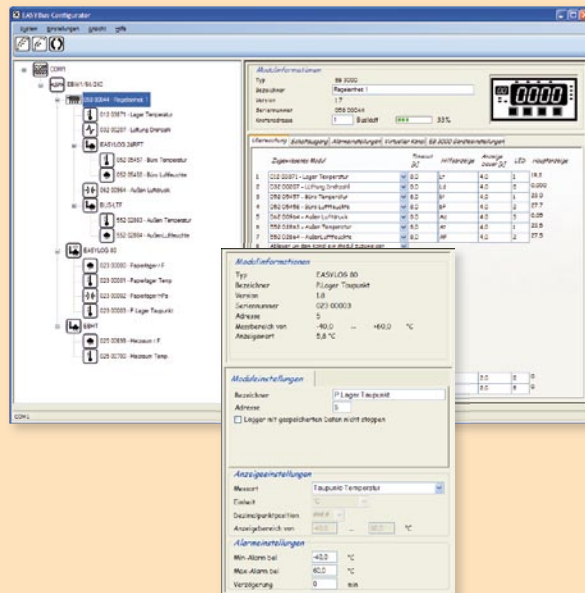


EASYBus-Configurator free of charge

Software for initial installation and configuration of EASYBus-systems.
Software executable with: Windows 2000, XP and Vista.

- EASYBus modules, display- and controlling-devices can be handled easily and comfortably.
- Listing of all connected modules in a treeview, therefore an easy overview of the system is possible.
- Settings of EASYBus modules can be done clearly.
- Easy installation of the EB3000 control-, display- and monitoring-device:
 - Adding of modules via Drag&Drop.
 - Programming of predefined virtual channel functions (included in software).
 - Switching- and alarm-outputs can be configured easily.

You can download this software from our homepage (www.greisinger.de) for free.



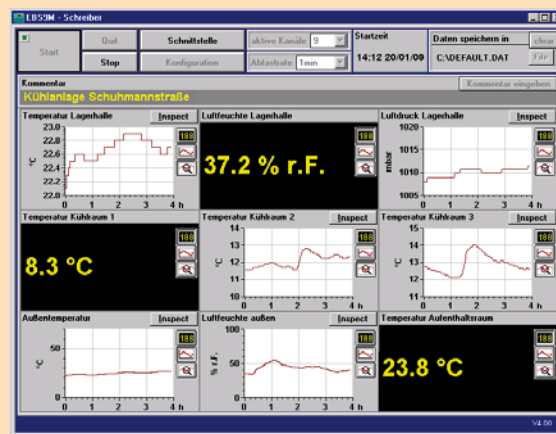
EBS 9M

Software for recording, monitoring and displaying up to 9 sensor modules of the EASYBus-series.
Software executable with: Windows 95, 98, Me, NT, 2000 and XP.

The software contains 3 modules.

- **Recording / large digit display:** Measurement is displayed during ongoing recording. The display type of each channel can be switched from large-digit-display to chart recorder during operation.
- **Data display:** Stored data sets can be displayed.
- **Export-Tool:** For modification of stored data files to use the data in other programs (e.g. Excel).

For further information please refer also to page 39.



EASYControl

Software for recording, monitoring, display and documentation of up to 240 sensor modules of the EASYBus-series.
Software executable with: Windows 95, 98, Me, NT, 2000 and XP.

- min./max. value monitoring for each measuring point
- straightforward display of current measuring values in form of table
- simple sorting of sensor module sequ. by means of drag and drop
- scanning cycle for each sensor module can be individually selected
- adding and deleting of sensor modules during recording operation
- display of measuring values as diagram or table
- separate fault list
- automatic system initialization with detection of all sensor modules connected
- automatic detection of new sensor modules
- fully automatic assignation and administration of bus addresses
- aut. detection of sensor module type, meas. range and meas. unit
- alarm supervision with EBB 4 OUT / ... - module (each one relays: min-, max-alarm, alarm in general)

The only thing left for you to do is entering your description!

Advance notice:

The software **EASYControl** is currently being redesigned. At press time of this catalogue an exact publication issue was not fixed.

Please observe our announcements at our website.

Sensormodul	Adresse	Min	Max
Lufthalle 1	5.8°C	3.2°C	9.4°C
Lufthalle 2	-20.2°C	-22.2°C	-13.2°C
Lufthalle 3	18.8°C	17.8°C	19.8°C
Lufthalle 4	3.9°C	8.4°C	13.3°C
Lufthalle 1 (Frucht)	23.3%	21.5%	24.0%
Lufthalle 2 (Frucht)	22.3%	21.3%	23.3%
Lufthalle 3 (Frucht)	26.3%	25.5%	26.3%
Lufthalle 4 (Frucht)	39.4%	27.8%	33.7%
Lufthalle Lager	1.214bar	1.012bar	1.012bar
Temperatur Lager	18.3°C	17.3°C	19.3°C
Lufthalle außen	38.5%	35.3%	38.5%
Temperatur außen	13.1°C	11.1°C	14.1°C
Temperatur 1 (Frucht)	13.3%	8.4%	14.3%
Temperatur 2 (Temperatur)	12.10bar	1.014bar	2.00bar
Temperatur 3 (Temperatur)	28.2°C	24.1°C	27.2°C
Temperatur 4 (Temperatur)	7.0%	4.4%	10.3%
Temperatur 5 (Lufthalle)	1.110bar	1.015bar	2.00bar
Lufthalle innen	4.0bar	3.2bar	4.5bar

Pub.-Nr.	Adr.	Sensormodul	Pub/Nr.	Min	Max
01881023	010	KG	EASYControl - Sensor Sender		
01881021	011	KG			
01881022	012	KG			
01881023	013	KG	Leuchtintensitätsmesser	0.001023	Steuerung 0 BT-2 RE
01191001	020	KG	Adresse	012	Modulbereich 40.0 - 530.0 °C
01191002	022	KG			
01191003	023	KG			
01191004	024	KG			
02050201	020	KG			
22503202	014	TH			
22503203	015	TH			
00112315	026	TH			
00112316	027	TH			
00112317	028	TH			
07750111	029	TH			
07750112	030	TH			