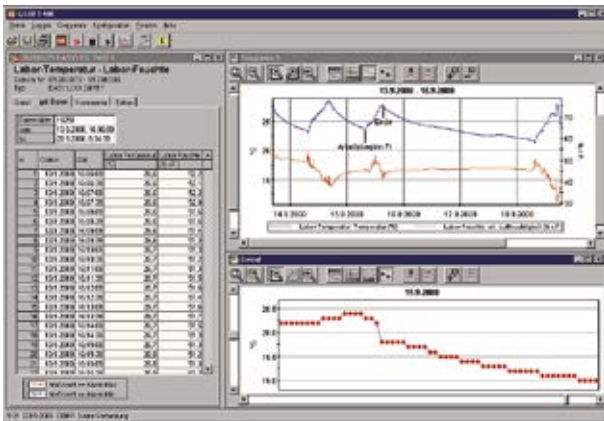


LOGGER-SOFTWARE

**GSOFT 40K**

Art. no. 601145

Windows-software for EASYLog and T-Logg with logger

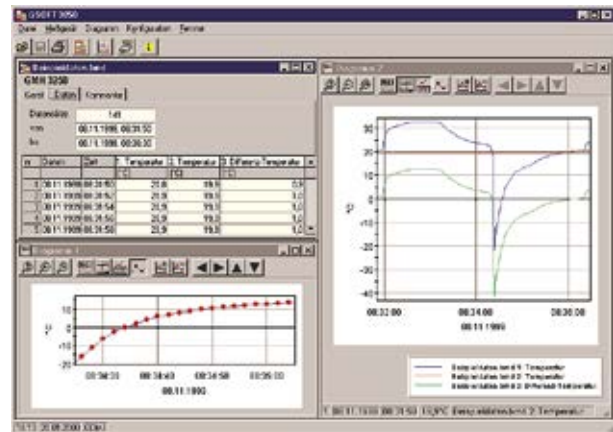
Functions:

- Display of the device status information
- Setting the alarm function
- Operation of the logger function
 - Start
 - Stop
 - Cycle time
 - Read data
 - Delete data
- Chart display
 - Various measuring sequences in one diagram
 - Real-time axis
 - Zoom function
 - Measurement points, legend and measurement cursor displayed or hidden
 - Add comments
 - Storing the window position
- Export function
 - Data export of series of measurements as a CSV file
- Print function
 - Print out the data as a table and/or trace
- Multilingual
 - German, English, Czech and French
- Automated retrieval and archiving
 - Readout of all connected data loggers to be fixed times
 - Automatic storage of measured values on the hard disk
 - Automatic export of measurement values as a CSV file
 - Automatic printout

System requirements:

1 GHz CPU, 1 GB RAM, 100 MB HDD
 Windows 7 SP 1 (32 or 64 Bit)
 interface converter
 for EASYLog: EBW 1, EBW 3, EBW 24
 for T-Logg: USB 5100
 (executable from Windows XP, not executable with Windows RT, ARM or Intel Itanium based Windows systems)

LOGGER-SOFTWARE

**GSOFT 3050**

Art. no. 601336

Windows-software for GMH3xxx- and GMH5xxx-series with logger

Functions:

- Display of the GMH-information
- Setting of the alarm function
- Operation of the logger function
 - start
 - stop
 - Cycle time
 - Read data
 - Delete data
- Diagram display
 - The Logger data can be displayed in the form of a diagram
 - Real-time axis
 - Zoom function
 - Display of legend and marking of measuring points can be switched on / off
 - Add comments
 - Storing the window position
- Export function
 - Data export of series of measurements as a CSV file
- Logger data print-out
 - Data can be printed as tables or as diagram
- Multilingual
 - German, English, Czech and French

System requirements:

1 GHz CPU, 1 GB RAM, 100 MB HDD
 Windows 7 SP 1 (32 or 64 Bit)
 interface converter
 for GMH 3000: GRS 3100, GRS 3105 or USB 3100 N
 for GMH 5000: USB 5100
 (executable from Windows XP, not executable with Windows RT, ARM or Intel Itanium based Windows systems)